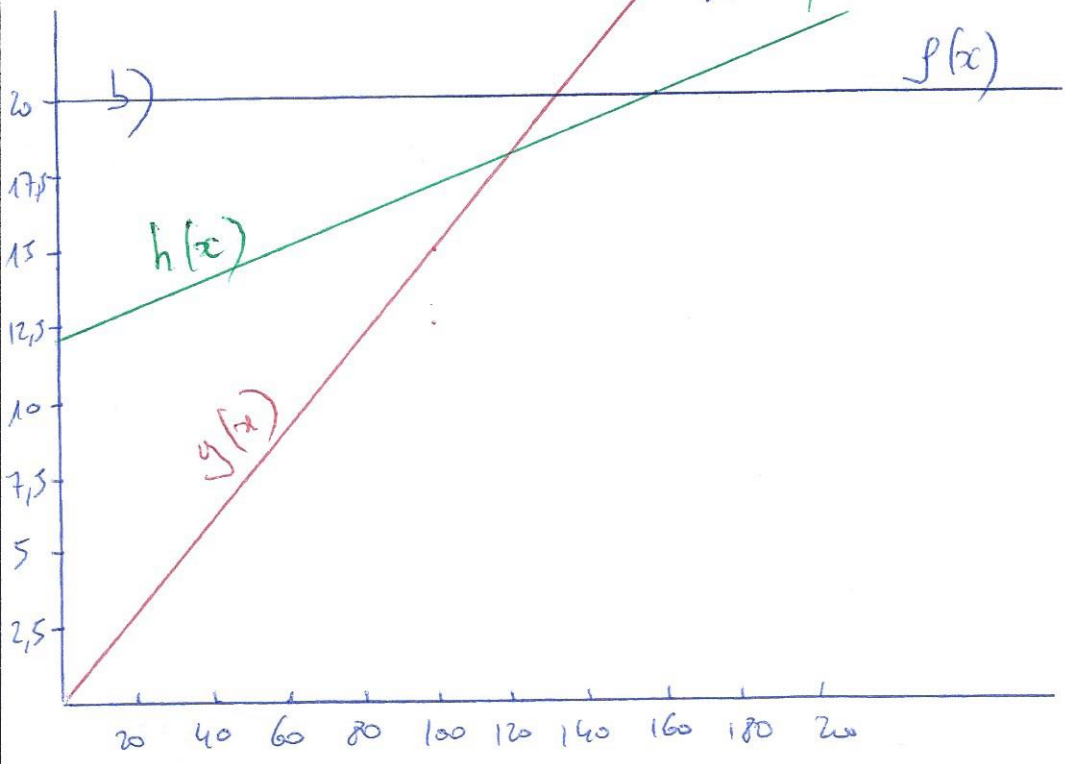


① a) $f(x) = 20$ *

$g(x) = 0,15x = 0,15x$ ~~✗~~ ✗

$h(x) = 0,05x + 12$ ~~✗~~ ✗



② a) $f(x) = g(x) \Leftrightarrow 20 = 0,15x \Leftrightarrow x = \frac{20}{0,15} \approx \underline{\underline{133,33}}$

$f(x) = h(x) \Leftrightarrow 20 = 0,05x + 12 \Leftrightarrow 0,05x = 8 \Leftrightarrow x = \frac{8}{0,05} = \underline{\underline{160}}$

$g(x) = h(x) \Leftrightarrow 0,15x = 0,05x + 12 \Leftrightarrow 0,1x = 12 \Leftrightarrow x = \underline{\underline{120}}$

- b)
- si $0 \leq \text{SNS} \leq 120$, il faut utiliser le forfait B
 - si $120 \leq \text{SNS} \leq 160$, " " C
 - si $\text{SNS} > 160$, " " A